

XUÂN VỀ

(Dùng nhập lễ hoặc dâng lễ)

Hương Vĩnh

A A A Xuân về, A A A Xuân

Detailed description: This system of musical notation is in 2/4 time with a key signature of one flat (B-flat). It begins with a treble clef and a bass clef. The first measure is a whole rest in the treble and a half note G2 in the bass. A repeat sign follows. The second measure is a whole rest in the treble and a half note G2 in the bass. The third measure has a treble clef and contains a quarter note G4, a quarter note A4, and a quarter note Bb4. The bass clef contains a half note G2. The fourth measure has a treble clef and contains a quarter note G4, a quarter note A4, and a quarter note Bb4. The bass clef contains a half note G2. The lyrics 'A A A Xuân về, A A A Xuân' are written below the treble staff.

Đông qua rồi mưa đã ngừng rơi. A A A Xuân
(Hoa khoe màu chim hót đùa vui.

1. về. Xuân về Trời Xuân tươi mới. Xuân về trên khắp mọi nơi.

Detailed description: This system of musical notation is in 2/4 time with a key signature of one flat. It begins with a treble clef and a bass clef. The first measure has a treble clef and contains a quarter note G4, a quarter note A4, and a quarter note Bb4. The bass clef contains a half note G2. The second measure has a treble clef and contains a quarter note G4, a quarter note A4, and a quarter note Bb4. The bass clef contains a half note G2. The third measure has a treble clef and contains a quarter note G4, a quarter note A4, and a quarter note Bb4. The bass clef contains a half note G2. The fourth measure has a treble clef and contains a quarter note G4, a quarter note A4, and a quarter note Bb4. The bass clef contains a half note G2. The lyrics 'về. Xuân về Trời Xuân tươi mới. Xuân về trên khắp mọi nơi.' are written below the treble staff. A first ending bracket is above the last two measures.

về Xuân về trời Xuân tươi mới. Xuân về trên khắp mọi nơi. Hoa khoe
Đàn chim vui...

2. hát. Xuân về ngàn hoa khoe tươi. Đàn..... Rall.....

Detailed description: This system of musical notation is in 2/4 time with a key signature of one flat. It begins with a treble clef and a bass clef. The first measure has a treble clef and contains a quarter note G4, a quarter note A4, and a quarter note Bb4. The bass clef contains a half note G2. The second measure has a treble clef and contains a quarter note G4, a quarter note A4, and a quarter note Bb4. The bass clef contains a half note G2. The third measure has a treble clef and contains a quarter note G4, a quarter note A4, and a quarter note Bb4. The bass clef contains a half note G2. The fourth measure has a treble clef and contains a quarter note G4, a quarter note A4, and a quarter note Bb4. The bass clef contains a half note G2. The fifth measure has a treble clef and contains a quarter note G4, a quarter note A4, and a quarter note Bb4. The bass clef contains a half note G2. The sixth measure has a treble clef and contains a quarter note G4, a quarter note A4, and a quarter note Bb4. The bass clef contains a half note G2. The seventh measure has a treble clef and contains a quarter note G4, a quarter note A4, and a quarter note Bb4. The bass clef contains a half note G2. The eighth measure has a treble clef and contains a quarter note G4, a quarter note A4, and a quarter note Bb4. The bass clef contains a half note G2. The lyrics 'hát. Xuân về ngàn hoa khoe tươi. Đàn..... Rall.....' are written below the treble staff.

hát. Xuân về muôn hoa khoe tươi.
ngàn hoa nở tươi.



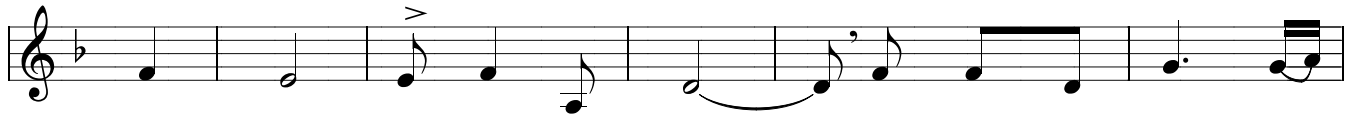
① Kính dâng Cha phút giây đầu năm. Lời ca tri ân cùng



với muôn câu chúc tụng. Xin Cha ban năm mới bình an, xin Cha



thương nâng đỡ ủi an dịu dặt con trên đường về tới thiên đàng. Đông qua...



② Chúa ơi! Xuân đã về đây. Vui Xuân tràn gian lòng



nhắc nhớ Xuân thiên đàng. Chính Chúa mới là mùa Xuân yên



vui, Chính Chúa mới là mùa Xuân yêu thương, Chúa chính



là mùa Xuân trường sinh. Đông qua...